



AVC-BLN41FT/2.8 AI

NDAA COMPLIANT | CE | FCC

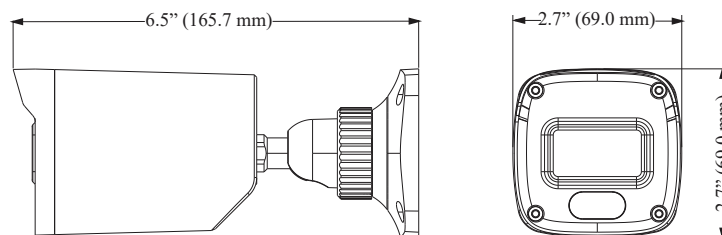
4MP H.265 IR WATER-PROOF BULLET NETWORK CAMERA

OVERVIEW

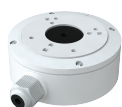
- H.265 /H.264/MJPEG coding
- Max resolution: 4MP (2560 x 1440)
- True Day / Night Operation with ICR Automatic Switching
- 3D DNR, WDR, HLC, BLC, Smart IR, and etc.
- ROI encoding
- Up to 100ft IR Night View Distance
- Built-in micro SD card slot with video and still image capture function (up to 256GB)
- DC12V/PoE power supply
- IP67 ingress protection
- Support three streams
- Support remote monitoring by smart phones & tablet PCs with iOS and Android OS
- Intelligent Analytics
- NDAA Compliant

DIMENSIONS

Unit : inch(mm)



OPTIONAL ACCESSORIES



AVM-BDMT-W-TL1
JUNCTION BOX



AVM-DPMT-W-TL1
CEILING MOUNT BRACKET

SPECIFICATIONS

| CAMERA | | | | | |
|------------------------------|--|------------------|-----------------|-----------------|----------------|
| Image Sensor | 1/3" Progressive Scan CMOS | | | | |
| Image Size | 2560 x 1440 | | | | |
| Shutter Speed | 1/2s to 1/100,000s | | | | |
| Iris Type | Fixed Iris | | | | |
| Min. Illumination | 0.005 lux@F1.6, AGC ON; 0 lux with IR | | | | |
| IR Distance | Up to 98ft | | | | |
| Lens | Fixed 2.8 @ F1.6 Horizontal FoV: 94° Vertical FoV: 50° Diagonal FoV: 115° | | | | |
| Focus | Fixed | | | | |
| Days & Night | ICR | | | | |
| Wide Dynamic Range | 120 dB | | | | |
| Digital NR | Yes | | | | |
| Backlight Compensation (BLC) | Yes | | | | |
| Highlight Compensation (HLC) | Yes | | | | |
| Defog | No | | | | |
| Angle Adjustment | Pan: 0° ~ 360°; Tilt: 0° ~ 80°; Rotation: 0° ~ 360° | | | | |
| VIDEO IMAGE | | | | | |
| Video Compression | Main stream: H.265 / H.264 Sub/third stream: H.265 /H.264 / MJPEG | | | | |
| H.265 Compression Standard | Main Profile@Leve4.1 High Tier | | | | |
| Resolution | 4MP (2560 x 1440), 3MP (2304 x 1296), 1080P (1920 x 1080), 720P (1280 x 720), D1, 480 x 240, CIF | | | | |
| Main Stream | 60Hz: 4MP/3MP/1080P/720P(1~30fps); 50Hz: 4MP/3MP/1080P/720P(1~25fps) | | | | |
| Sub Stream | 60Hz: 720P/D1/CIF (1~30fps); 50Hz: 720P/D1/CIF (1~25fps) | | | | |
| Third Stream | 60Hz: D1/480x 240/CIF (1~30fps); 50Hz: D1/480x 240/CIF(1~25fps) | | | | |
| Video Bit Rate | 64 Kbps ~ 8 Mbps (CBR / VBR Adjustable) | | | | |
| Image Settings | ROI, Saturation, Brightness, Hue, Contrast, Wide Dynamic, Sharpness, Image Mirror, Image Flip, NR, etc. adjustable through client software or web browser | | | | |
| ROI | Each ROI to be configured separately | | | | |
| NETWORK / INTERFACE | | | | | |
| Network | 1 x RJ45 10M / 100M Self-Adaption | | | | |
| Network Protocol | UDP, DHCP, NTP, RTSP, RTP, RTCP, PPPoE, DDNS, SMTP, FTP, 802.1x, SNMP, UPnP, HTTP, HTTPS, QoS | | | | |
| Interface Protocol | ONVIF | | | | |
| Web Browser | IE (Plug-in required) / Google Chrome / Edge / Firefox / Safari | | | | |
| Online Connection | Support simultaneous monitoring for up to 3 users; Support multi-stream real time transmission | | | | |
| Storage | Micro SD/SDHC/SDXC Slot (up to 256GB) with video and still image capture function | | | | |
| Video Output | No | | | | |
| Audio | 1CH audio input | | | | |
| Alarm | N/A | | | | |
| Hardware Reset | Yes | | | | |
| DORI DISTANCE | | | | | |
| | Lens | Detect | Observe | Recognize | Identify |
| | 2.8mm | 202.62ft(61.76m) | 81.03ft(24.70m) | 40.51ft(12.35m) | 20.27ft(6.18m) |
| FUNCTIONS | | | | | |
| Remote Monitoring | Web Browser Interface, Mobile App, AVYCON CVMS 2.0 | | | | |
| Smart Alarm | Motion detection, SD card full, SD card error | | | | |
| Smart Analytics | Video Exception (scene change, video blurr and video cast detection), line crossing detection and region intrusion detection | | | | |
| General Function | Watermark, IP address filtering, video mask, heartbeat, illegal login lock, corridor pattern | | | | |
| GENERAL | | | | | |
| Power Supply | DC12V/PoE | | | | |
| Power Consumption | <5W | | | | |
| Operating Environment | -22°F ~ 140°F (-30°C ~ 60°C) Humidity: less than 95% (non-condensing) | | | | |
| Storage Environment | -22°F ~ 149°F (-30°C ~ 65°C) Humidity: less than 95% (non-condensing) | | | | |
| Dimensions (in) | 6.52 x 2.71 x 2.71 | | | | |
| Weight (lb) | Approx. 0.86 lbs | | | | |
| Ingress Protection | IP 67 | | | | |
| Certificate | CE, FCC | | | | |
| Installation | Ceiling mounting; Wall mounting | | | | |
| Environmental Protection | Complies with Directive EU RoHS, WEEE(2012/19/EU), directive 94/62/EC and REACH (EC1907/2006) | | | | |